

Protect your every day.

# RECOGNIZE THE SIGNS OF SUSPICIOUS ACTIVITY



## EXPRESSED OR IMPLIED THREAT

Threatening to commit a crime that could harm or kill people or damage a facility, infrastructure, or secured site



## SURVEILLANCE

A prolonged interest in or taking pictures/videos of personnel, facilities, security features, or infrastructure in an unusual or covert manner



## THEFT/LOSS/DIVERSION

Stealing or diverting items—such as equipment, uniforms, or badges—that belong to a facility or secured site



## TESTING OR PROBING OF SECURITY

Investigating or testing a facility's security or IT systems to assess the strength or weakness of the target



## AVIATION ACTIVITY

Operating or interfering with the operation of an aircraft that poses a threat of harm to people and property



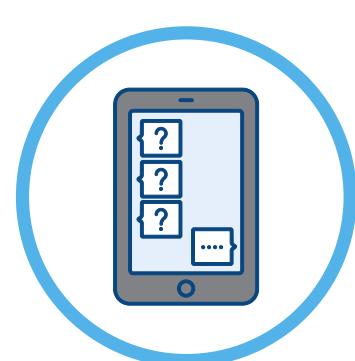
## BREACH/ATTEMPTED INTRUSION

Unauthorized people trying to enter a restricted area or impersonating authorized personnel



## ACQUISITION OF EXPERTISE

Gaining skills or knowledge on a specific topic, such as facility security, military tactics, or flying an aircraft



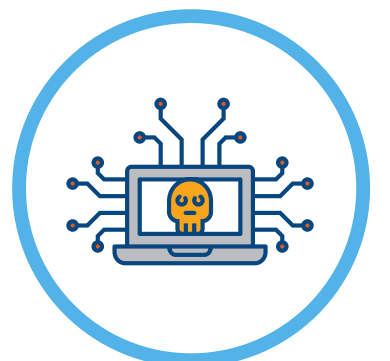
## ELICITING INFORMATION

Questioning personnel beyond mere curiosity about an event, facility, or operations



## MISREPRESENTATION

Presenting false information or misusing documents to conceal possible illegal activity



## CYBERATTACK

Disrupting or compromising an organization's information technology systems



## RECRUITING/FINANCING

Funding suspicious or criminal activity or recruiting people to participate in criminal or terrorist activity



## SABOTAGE/TAMPERING/VANDALISM

Damaging or destroying part of a facility, infrastructure, or secured site



## MATERIALS ACQUISITION/STORAGE

Acquisition and/or storage of unusual materials such as cell phones, radio controllers, or toxic materials



## WEAPONS COLLECTION/STORAGE

Collection or discovery of unusual amounts of weapons including explosives, chemicals, or other destructive materials



## SECTOR-SPECIFIC INCIDENT

Actions which raise concern to specific sectors, (e.g., power plant) with regard to their personnel, facilities, systems, or functions

If you **see** something, **say** something®

REPORT SUSPICIOUS ACTIVITY TO LOCAL AUTHORITIES OR CALL 9-1-1 IN CASE OF EMERGENCY



GSA SECURITY 805-654-2931  
- 24/7 • 365 -



"If You See Something, Say Something" used with permission of the NY Metropolitan Transportation Authority.